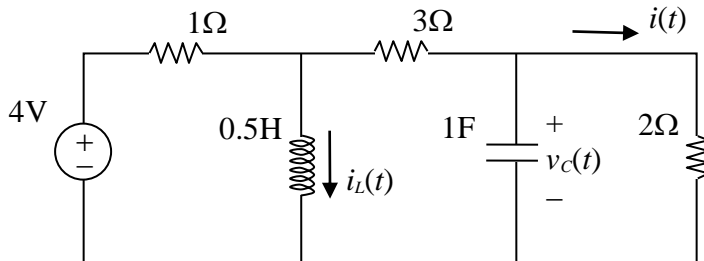


**NCTU-ECE Introduction to Electric Circuit (B)**  
**Practice Problems (2023/11/15)**

40%

1. If  $i_L(0) = 1 \text{ A}$  and  $v_C(0) = 1 \text{ V}$ , determine the current  $i(t)$ .



60%

2. If there are no initial values for the inductor and capacitances, determine the current  $i(t)$ .

